

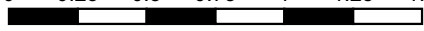

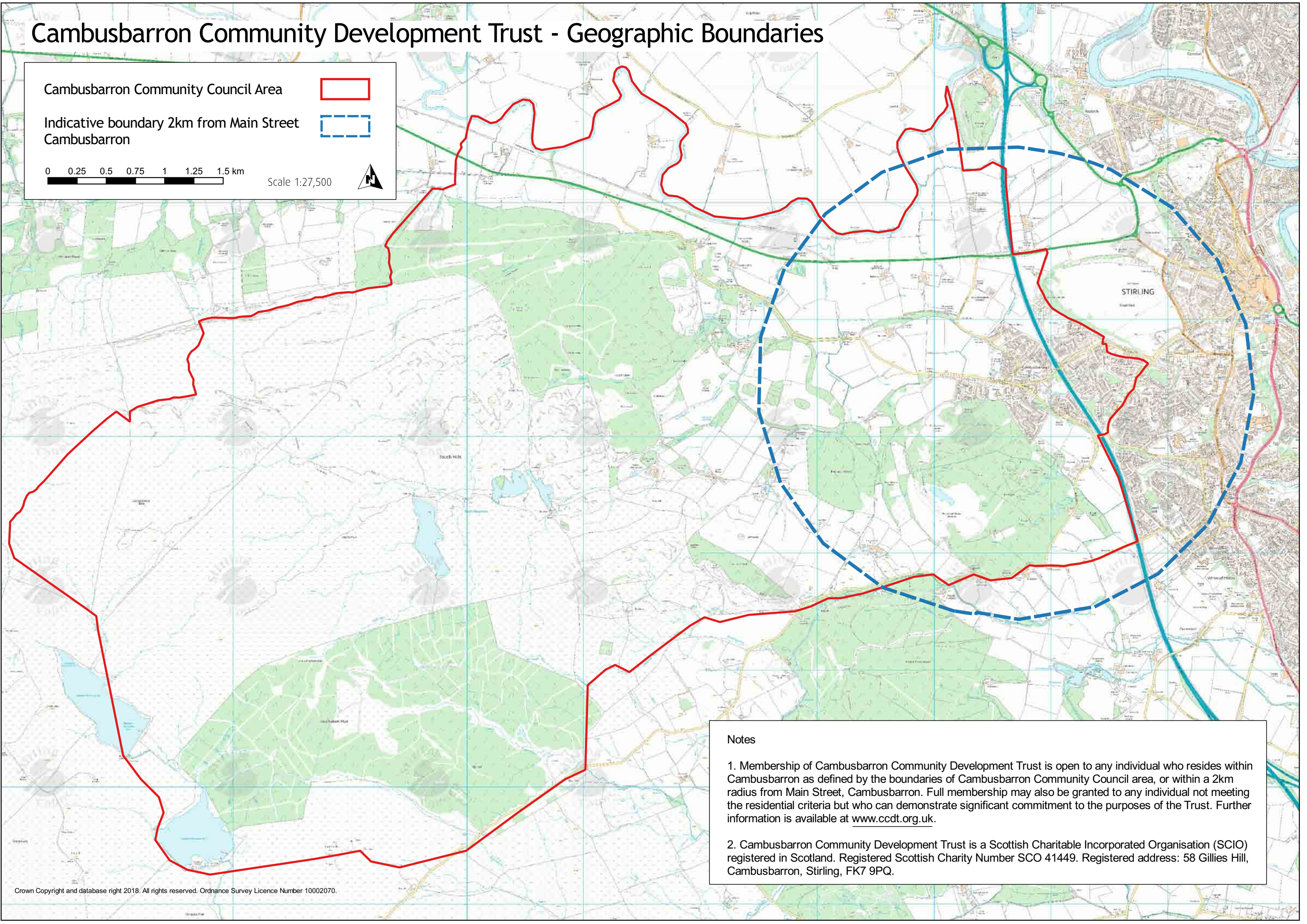


Cambusbarrow Community Development Trust - Geographic Boundaries

Cambusbarrow Community Council Area 

Indicative boundary 2km from Main Street Cambusbarrow 

0 0.25 0.5 0.75 1 1.25 1.5 km  Scale 1:27,500 



Notes

1. Membership of Cambusbarrow Community Development Trust is open to any individual who resides within Cambusbarrow as defined by the boundaries of Cambusbarrow Community Council area, or within a 2km radius from Main Street, Cambusbarrow. Full membership may also be granted to any individual not meeting the residential criteria but who can demonstrate significant commitment to the purposes of the Trust. Further information is available at www.ccdt.org.uk.

2. Cambusbarrow Community Development Trust is a Scottish Charitable Incorporated Organisation (SCIO) registered in Scotland. Registered Scottish Charity Number SCO 41449. Registered address: 58 Gillies Hill, Cambusbarrow, Stirling, FK7 9PQ.